

THE GREATER BRAZOS REGION

A Hub for Innovation and Opportunity

AGENDA



FEBRUARY 4, 2026

- BREAKFAST & INTRODUCTION
8:30 - 9:30
- PRESENTATION BY DR. STEVE PUTNA, DIRECTOR OF THE TEXAS A&M SEMICONDUCTOR INSTITUTE
10:00 - 10:45
- DRIVING TOUR OF RELLIS CAMPUS
10:45 - 11:45
- LUNCH AT PORTER'S RESTAURANT
12:00 - 1:00
- DEPARTURE FROM BRYAN - COLLEGE STATION
1:15

ABOUT THE PARTNERSHIP



The [Greater Brazos Partnership](#) is your trusted partner for exploring expansion opportunities in the heart of the Texas Triangle.

As a public-private partnership, we are funded and led by local governments, Texas A&M University and System, and private sector companies throughout our region.

We offer tailored, no-cost services designed to showcase our region's strengths and attract new investments on a global stage.

By understanding your unique business needs, our dedicated team streamlines access to essential market insights and local connections—from promoting regional capabilities to facilitating strategic introductions.

INDUSTRIES OF FOCUS

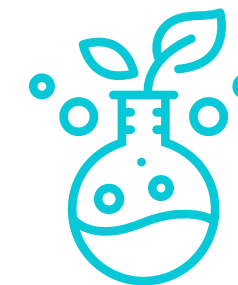
Advanced manufacturing is a key strength for the region



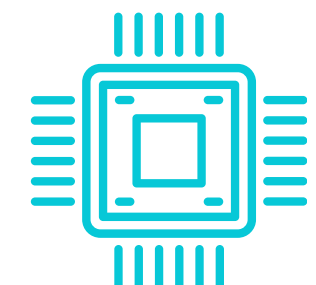
AEROSPACE + DEFENSE



ENERGY



LIFE SCIENCES + AGTECH



SEMICONDUCTORS

THE GREATER BRAZOS REGION



THE GREATER BRAZOS REGION INCLUDES
BRAZOS, BURLESON, GRIMES, ROBERTSON,
AND WASHINGTON COUNTIES

3,543 SQUARE MILES

357,622 POPULATION SIZE

16% EST. POPULATION GROWTH RATE OVER
THE NEXT TEN YEARS

\$59,100 MEDIAN WAGE

61% OF THE POPULATION IS UNDER 40 --
COMPARED TO 51% NATIONWIDE

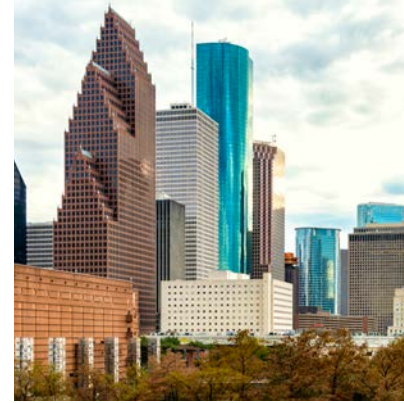


LABOR FORCE



The under-35 population makes up 60% of the population in Bryan and College Station compared to 44% nationwide.

With a significantly younger population than the rest of the United States, professionals are ready to start and grow their careers in the Greater Brazos Region.



1,272,081

LABOR FORCE WITHIN 75 MILES

20,260,640

POPULATION WITHIN A THREE-HOUR DRIVE

DRIVING DISTANCE



CONVENIENT DRIVING
DISTANCE TO FOUR OF THE
11 LARGEST CITIES IN THE US



DALLAS/FT WORTH
2.5 HOURS AWAY
2.3MM POPULATION

AUSTIN
2 HOURS AWAY
1MM POPULATION

SAN ANTONIO
3 HOURS AWAY
1.5MM POPULATION

HOUSTON
1.5 HOURS AWAY
2.3MM POPULATION

CUSTOMER MARKET PROXIMITY & LOW COST OF LABOR

The region's location at the center of the Texas Triangle offers a "hub-n-spoke" workforce advantage for employers to leverage low regional commuting times and easy outreach to the largest US metros.

Labor costs are 30% less than the national average, and the overall cost of doing business is over 20% less than the nation.



The population of the Texas Triangle is expected to reach **25 MILLION** by 2034 - marking explosive growth in the region.

QUICK FACTS



Texas is the 8th largest economy in the world based on GDP, ahead of Russia, Canada, Italy, & Brazil.



In 2023, Texas was the nation's top exporter for the 22nd year in a row.



The Texas civilian workforce of 15 million+ is further bolstered by new residents, as Texas leads the nation in population growth for 10 straight years.



With no corporate income tax and no individual income tax, Texas has one of the lowest tax burdens in the country.



Texas was #1 in the nation for jobs added in 2023 with 326,700 jobs.



Texas ranks #1 in the nation for foreign trade zone economic impact.

FORTUNE 500 COMPANIES WITH HEADQUARTERS IN TEXAS



TEXAS IS HOME TO 55 FORTUNE 500 CORPORATE HEADQUARTERS -- MORE THAN ANY OTHER STATE

Source: Office of the Governor, Texas Economic Development & Tourism Office, 2024



THE GREATER BRAZOS REGION DELIVERS METRO-LEVEL MARKET ACTIVITY WITH SIGNIFICANTLY LOWER HOUSING COSTS.

	Dollar Volume YoY%	Average Price	Median Price	Active Listings EOM
Bryan-College Station	4.83%	\$373,747	\$314,225	1,053
DFW	4.98%	\$500,212	\$398,457	25,908
Austin	-0.18%	\$567,535	\$440,000	10,332
San Antonio	0.78%	\$313,985	\$269,900	4,855
Houston	3.55%	\$422,921	\$355,000	27,691

Source: TAMU Texas Real Estate Research Center, 2024

EMPLOYEE AVAILABILITY



THE REGION HAS WITNESSED A FASTER INCREASE IN WORKFORCE GROWTH AND STRONG EDUCATION LEVELS PROPELLED BY TEXAS A&M UNIVERSITY.

	Labor Force Growth % (2019 - 2024)	Unemployment Rate	Bachelor's Degree %	Graduate Degree or Higher %
Bryan-College Station	7.4%	3.68%	22.3%	16.8%
DFW	3.2%	4.18%	24.7%	14.3%
Austin	5.8%	3.75%	31.8%	18.6%
San Antonio	2.7%	4.15%	20.2%	12.1%
Houston	0.5%	4.77%	22.1%	13.4%

Source: Lightcast, 2025

K-12 EDUCATION



BENEFITTING FROM PERSONALIZED LEARNING, THE REGION DELIVERS HIGHER GRADUATION RATES AND STRONGER ACADEMIC PERFORMANCES.

	Students	4-YR Graduation Rate	Avg SAT Score	Students Per Teacher
Bryan ISD	15,864	92.6%	924	13.4
College Station ISD	14,139	95.8%	1132	14.2
Austin ISD	72,739	93.1%	1042	14.3
San Antonio ISD	44,635	88.2%	868	15.2
Houston ISD	183,603	85.1%	931	16.1
Dallas ISD	139,096	82.6%	903	13.6

Source: Texas Tribune Public Schools Explorer, 2023-2024

WORKFORCE PIPELINE & EDUCATIONAL PROGRAMS

The Greater Brazos Region offers a highly skilled workforce, developed through specialized programs that produce top engineering and trade talent.

Local partnerships—with Texas A&M, Blinn College, school districts, and private industries—align education with industry needs.

Support initiatives include the RELLIS Academic Alliance, Blinn College and Texas A&M Career Services, and the Brazos Valley Business Education Partnership Action Team.

Additionally, our local school districts, like Bryan ISD, College Station ISD, Brenham ISD, and Navasota ISD, have robust career & technical education programs with curriculum in areas such as robotics, manufacturing, and IT.

100,000+

STUDENT PIPELINE FROM TEXAS A&M, BLINN COLLEGE, AND TAMUS RELLIS

49,456 SQ. FOOT

OF MANUFACTURING/LAB SPACE, AS WELL AS OFFICE, RESEARCH, AND MEETING SPACE AT THE BRYAN ISD CTE CENTER



THE TEXAS A&M UNIVERSITY SYSTEM

The Texas A&M University System is one of the largest systems of higher education in the nation, with a budget of \$7.3 billion.



\$1.54 BILLION

ANNUAL RESEARCH EXPENDITURES

#1

TOTAL RESEARCH EXPENDITURES IN TEXAS;
TOP 20 IN THE US

79,114

FALL 2024 ENROLLMENT AT TEXAS A&M
UNIVERSITY

Through a statewide network of 11 universities, a comprehensive health science center, eight state agencies, Texas A&M-Fort Worth and Texas A&M-RELLIS, the Texas A&M System educates more than 157,000 students and makes more than 21 million additional educational contacts through service and outreach programs each year.

TEXAS A&M UNIVERSITY

Quick Facts

- Highly ranked programs including Petroleum Engineering (#1 & #2 Graduate School), Biological & Agricultural Engineering (#1), Nuclear Engineering (#6 Graduate School), Ocean Engineering (#1) and Aerospace (#8 Public Graduate School)
- #1 in Undergraduate Degrees Awarded in Texas
- #1 in Enrollment
- #1 in Transfer Graduation Rate



Source: TAMU Office of Academic and Business Performance Analytics

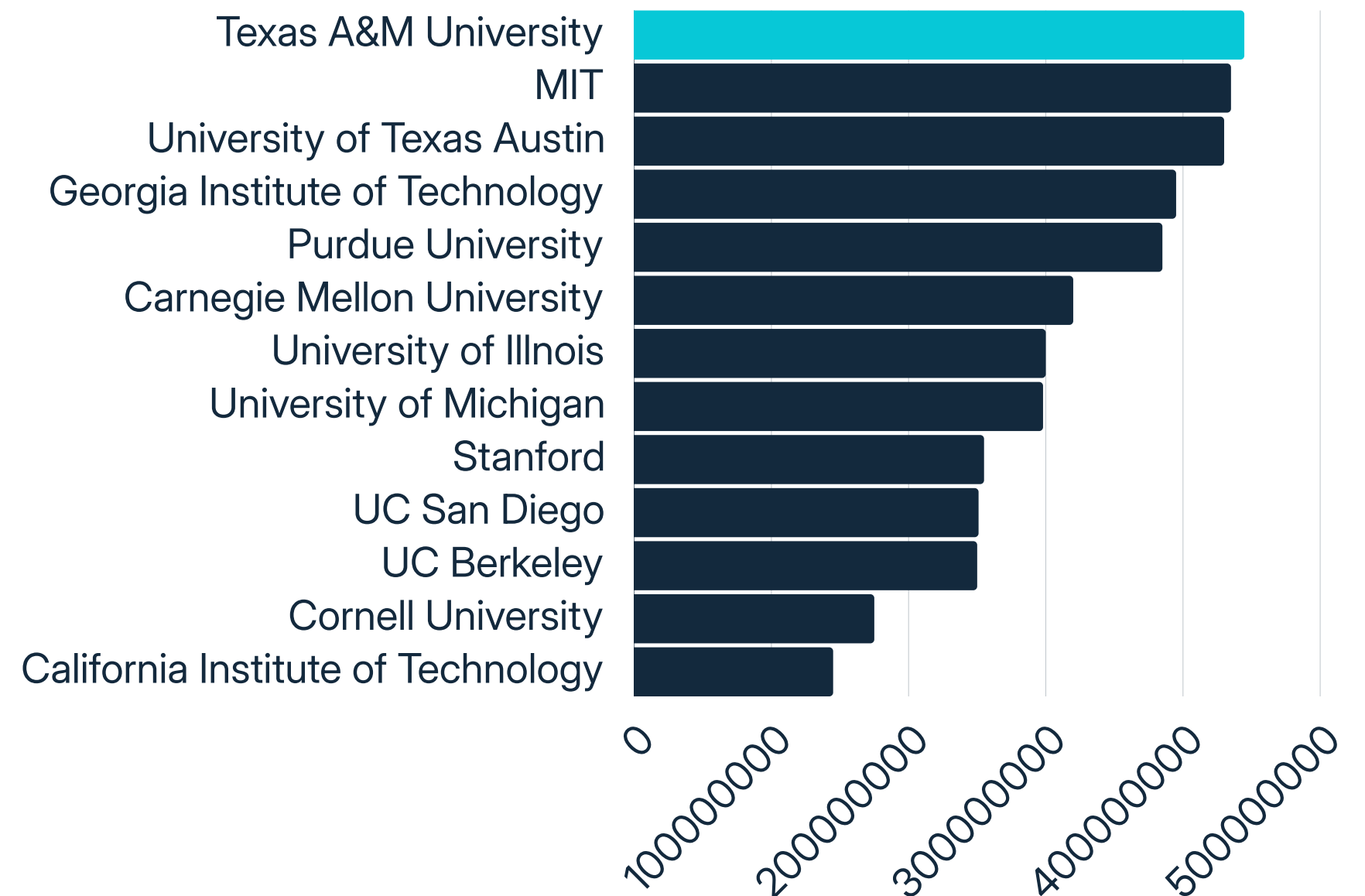
#1

BEST VALUE SCHOOL IN TEXAS PUBLIC UNIVERSITIES

#1

PUBLIC UNIVERSITY IN TEXAS

Annual Engineering Research Expenditures (in \$)



TEXAS A&M RELLIS CAMPUS

The RELLIS Campus is a premier hub for innovation, research, and workforce development, providing cutting-edge resources and collaborative opportunities to support industry growth.



The [RELLIS Campus](#) at Texas A&M University represents a significant development aimed at fostering innovation and collaboration in education and research. Originally a military site, the campus has evolved into a center for emerging technologies, particularly in the fields of infrastructure, transportation, and smart technologies.

[The RELLIS Campus is a premiere, 3,300-acre high-tech research, technology development, and education campus.](#)

RELLIS embraces alliances with industry partners for research, testing, and tailored curriculums to meet industry needs.

RELLIS is home to the Texas A&M Semiconductor Institute & Bush Combat Development Complex, and other industry specific research institutes.

TEXAS A&M SEMICONDUCTOR INSTITUTE

America invented the microchip.
Texas A&M is going to reinvent it.



The [Texas A&M Semiconductor Institute](#) is a multidisciplinary research organization within the Office of Research at the A&M System, established to advance semiconductor manufacturing technology and promote workforce development in the semiconductor industry.

As a hub for collaboration between academic researchers, industry partners, and government agencies, TSI aims to develop innovative solutions to complex semiconductor manufacturing challenges.

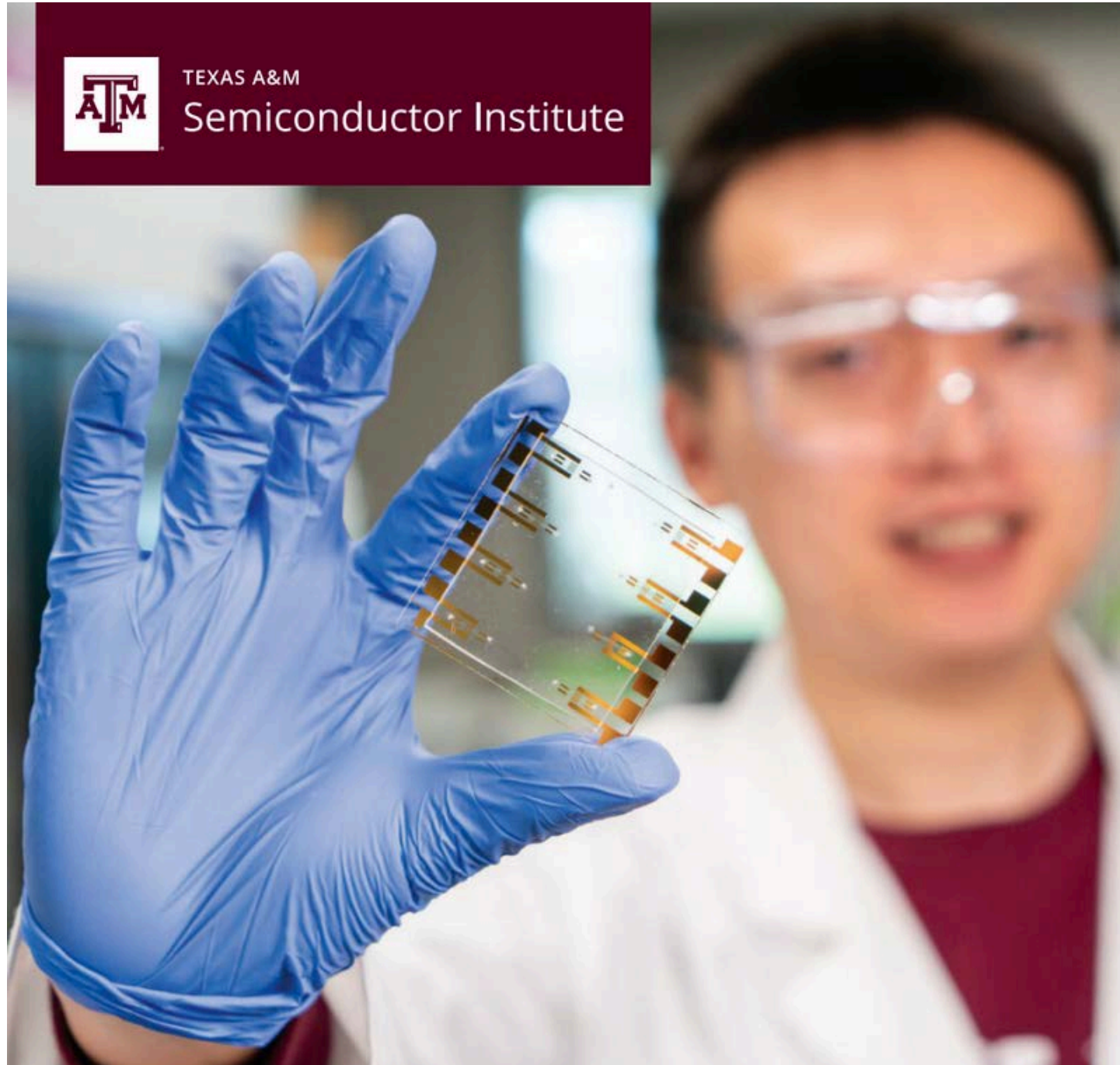
CORE INITIATIVES

- Advance R&D in semiconductor materials, processes, and devices—such as disruptive lithography
- Partner with industry to commercialize technology and shape future research
- Provide education and training opportunities for students, researchers, and industry professionals to advance their skills in semiconductor manufacturing
- Support startup formation and semiconductor innovation
- Develop secure fabrication capabilities for national defense
- Strengthen U.S. leadership and security in semiconductor manufacturing

THE TEXAS A&M SEMICONDUCTOR INSTITUTE



TEXAS A&M
Semiconductor Institute



\$1.28 MILLION

IN FUNDING FOR THE WORKFORCE
ADVANCEMENT IN VERIFICATION
AND EVALUATION OF CHIPS
(WAVE-CHIP) PROGRAM

TIER ONE RESEARCH MEMBER

OF THE SEMICONDUCTOR
RESEARCH CORPORATION
SMART USA INSTITUTE

350 REGISTRANTS

FOR THE SECOND ANNUAL
TEXAS SEMICONDUCTOR
SUMMIT (A 50% INCREASE)

3

NEW
CERTIFICATE
PROGRAMS

NEW MASTER OF SCIENCE PROGRAM

IN MICROELECTRONICS
AND SEMICONDUCTORS

TEXAS A&M ENERGY PROVING GROUND



- **First reactors within five years** - The first operational SMRs could be completed and supplying power within 5 years.
- **Advancing research & workforce development** - The project will leverage A&M's nuclear engineering expertise and contribute to training the next generation nuclear workforce.
- **Strategic location for power & innovation** - The Energy Proving Ground will support the Electric Reliability Council of Texas (ERCOT) and help power data centers, AI infrastructure, and more.



TEXAS A&M ENERGY INSTITUTE



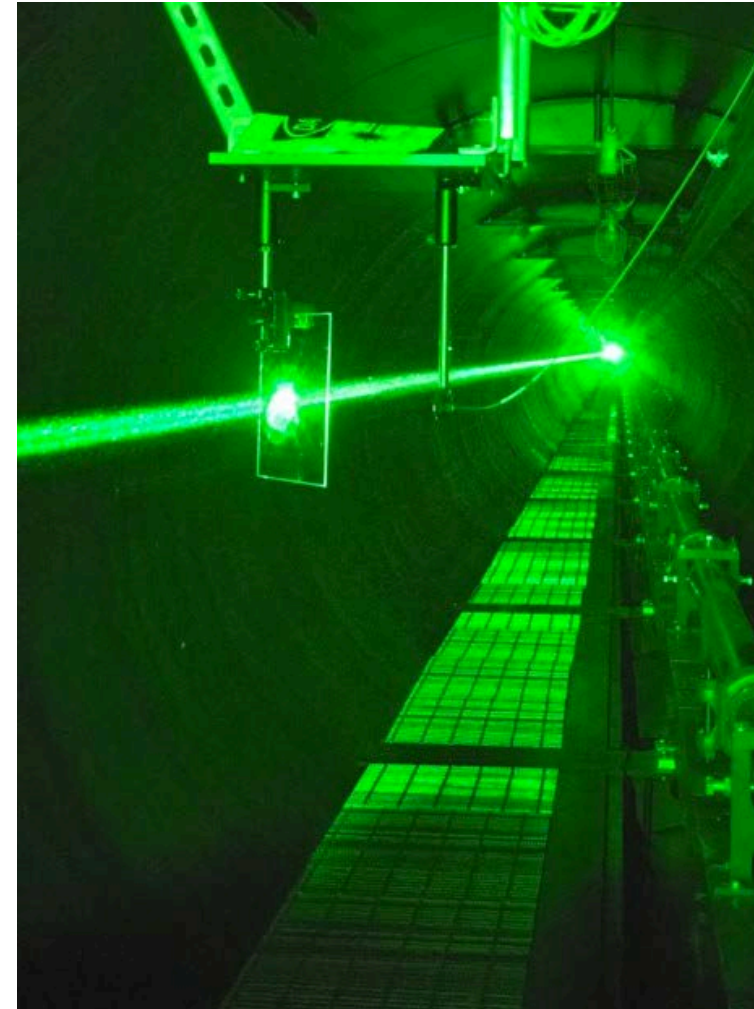
BUSH COMBAT DEVELOPMENT COMPLEX



The [Innovation Proving Ground \(IPG\)](#) provides a challenging outdoor test site for autonomous aerial, ground and subterranean vehicles. The systems involved are highly complex, involving networks and sensors and innovative operating systems.

The [Research Integration Center \(RIC\)](#) is a state-of-the-art innovation hub where researchers, students, industry, government and the military collaborate to create emerging technologies that will modernize the Army.

Hypersonics and directed energy research are conducted in the one-of-a-kind [Ballistic, Aero-optics, and Materials \(BAM\) Range](#). BAM features an above-ground tunnel that is one kilometer long and two meters in diameter, as well as integrated sensors. Also, a new \$30 million hypersonic wind tunnel at the Bush Combat Development Complex will help researchers design and test projects to strengthen national security.



TEXAS A&M SPACE INSTITUTE

The Texas A&M Space Institute is a new facility, funded by a \$200M investment from the Texas Legislature, which broke ground in late 2024. With a strategic location in Houston adjacent to the Johnson Space Center, this facility will provide endless opportunity for research, education, and development.

This facility will have the capabilities to conduct specialized research across many areas including:

- Materials Science
- Planetary Science & Biology
- Human Health & Behavior in Space
- Habitation in Space



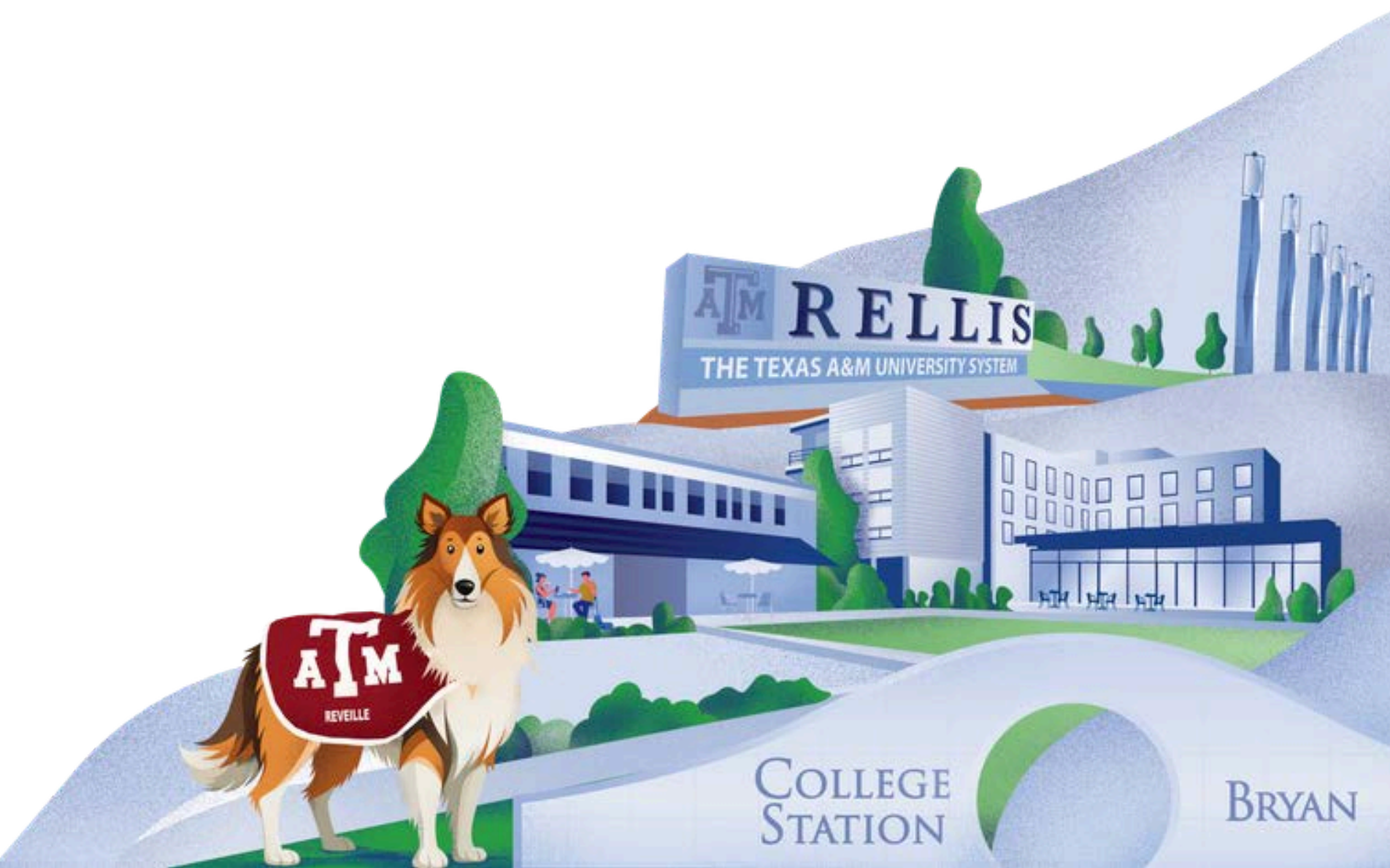


PLUG AND PLAY

The Innovation Triangle office is a partnership between Plug and Play, Texas A&M Innovation, and the Greater Brazos Partnership.

FAST FACTS

- The Innovation Triangle office connects startups with Fortune 500 corporations and aerospace and defense innovators, fostering global collaboration.
- This initiative accelerates innovation in critical areas such as national security technologies and advanced systems development, reinforcing the region's strategic importance.
- Through mentorship, funding opportunities, and access to Plug and Play's expansive global network, the Innovation Triangle office provides cutting-edge support that propels startup success and attracts industry leaders.
- These collaborations leverage the expertise of Texas A&M Innovation, bridging research and application to tackle real-world challenges.



TEXAS A&M TRIPLES COMPUTING CAPACITY



TEXAS A&M UNIVERSITY SUPERCOMPUTERS

- Texas A&M made a \$45 million investment in an NVIDIA DGX SuperPOD
- Expected to be one of the highest-performing AI supercomputers at any North American university.
- Triples A&M's computing capacity and positions the university as a global leader in AI education and research.
- Housed at the West Campus Data Center
- Features 760 NVIDIA Hopper GPUs



TEXAS A&M
UNIVERSITY



NATIONAL CENTER FOR THERAPEUTICS MANUFACTURING

The [National Center for Therapeutics Manufacturing \(NCTM\)](#) is an interdisciplinary workforce education and research center serving the global biopharmaceutical and vaccine manufacturing industries.

A member of the Texas A&M Engineering Experiment Station, NCTM develops and delivers customizable instructor-led, computer-based, and hands-on learning to expose the student to various aspects of cell culture and basic molecular biology, aseptic processes and microbiology, upstream and downstream processing of biological materials including viruses, mRNA, monoclonal antibodies and other recombinant proteins, as well as industrial bioanalytical methods.



REGIONAL MANUFACTURING OPERATIONS



Fujifilm (747 employees) operates the largest single-use CDMO in North America. Fujifilm broke ground on a \$300 million expansion in College Station in 2022 and is the largest private sector employer in the Greater Brazos Region.

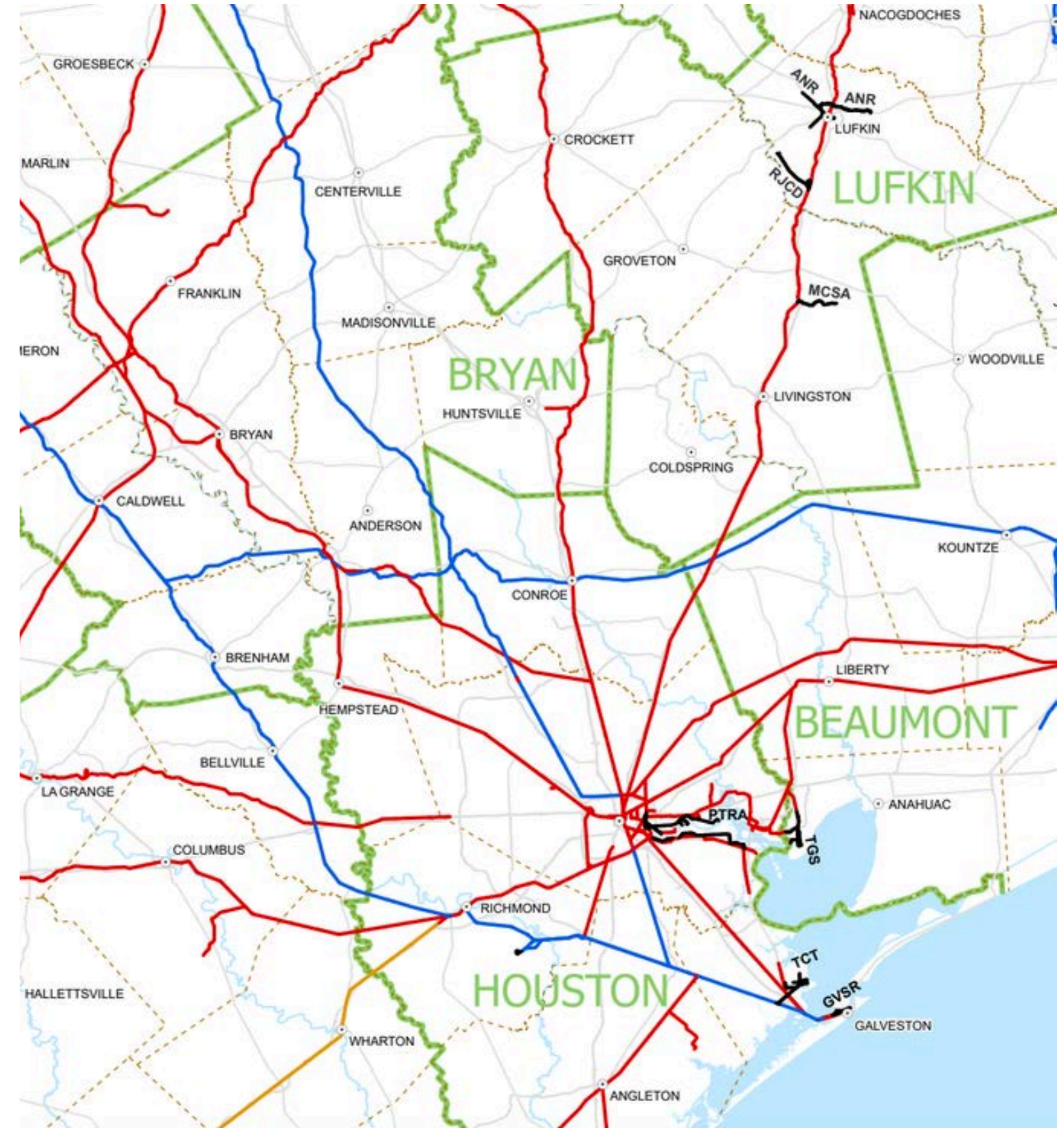
Honeywell operates a 25,000 SF chemical manufacturing facility in Bryan. This is the only North American manufacturer of ultra-pure hydrofluoric acid - vital to semiconductor manufacturing. Honeywell was recently approved for a \$120 million dollar expansion.

G-CON Manufacturing (320 employees) designs, constructs, and installs prefabricated G-CON POD cleanrooms, providing scalable, mobile, and adaptable solutions for labs, personalized medicine, and production processes. G-CON's facility has grown from 12,000 to 400,000 SF and employs over 300 people in the area.

FREIGHT RAIL TRANSPORTATION

Class 1 freight railroads operated by Union Pacific and BNSF connect the Greater Brazos Region to the Port of Houston, and the rest of the United States.

Red Lines - Union Pacific
Blue Lines - BNSF Freight Rail
Green Lines- District Boundary
Intermodal Station – Houston



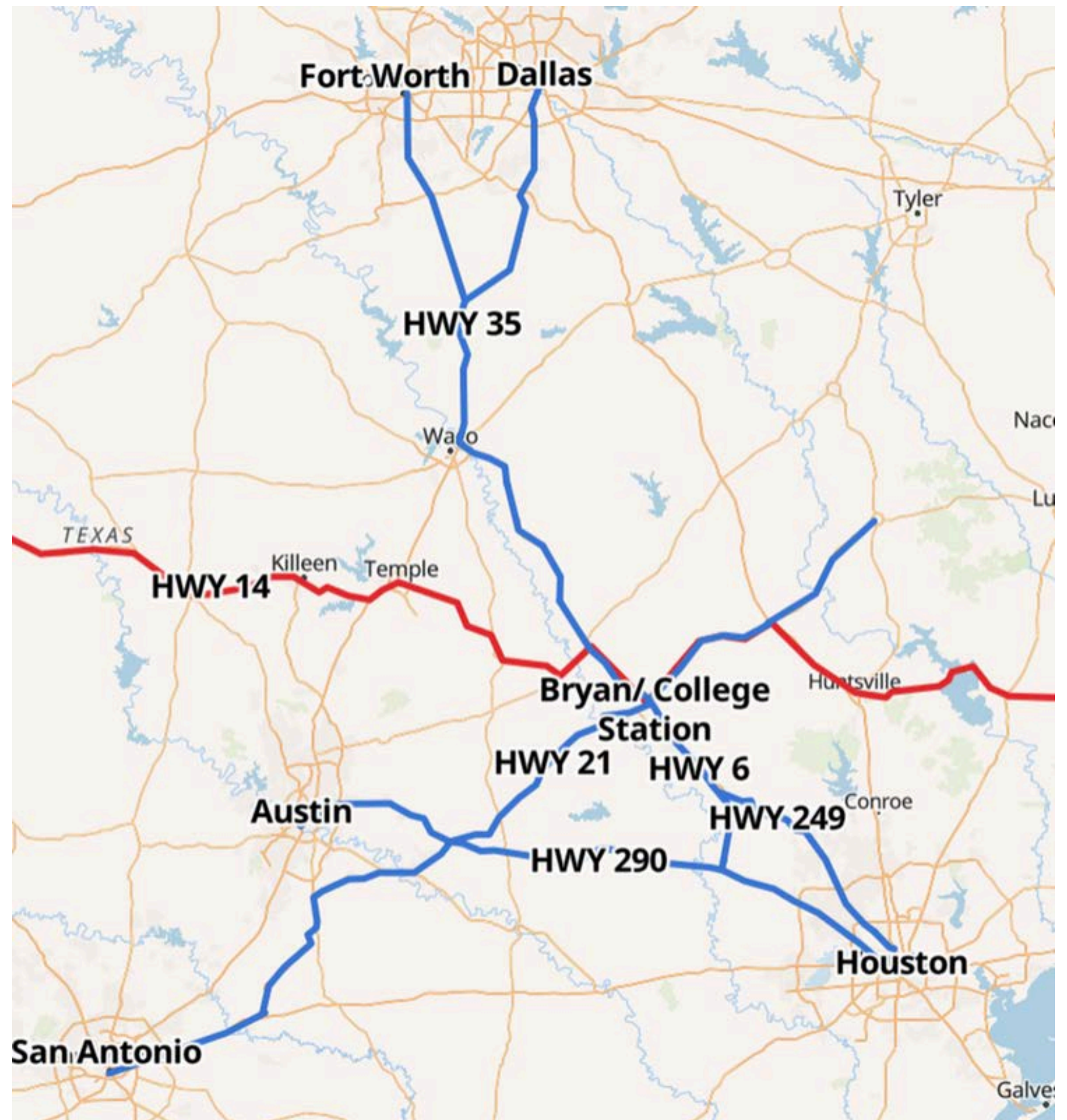
Source: Texas Transportation Commission, 2023



ROAD/HIGHWAY TRANSPORTATION

The Greater Brazos Region provides strategic logistical advantages with central, direct access to the Texas Freight Network.

State HWY 6 (N/S)
State HWY 21 (E/W)
US HWY 290 (E/W)
State HWY 249 (Quick access to Houston)
US HWY 35 (N/S)
US HWY 14 (E/W) - *Future*



AIRPORT CONNECTIVITY

The region has access to three major international airports, serving hundreds of domestic and international destinations. IAH is within 85 miles, AUS is within 100 miles, and DFW is within 200 miles.

Easterwood Regional Airport provides daily nonstop flights to Dallas and services over 56,000 private, commercial and military aircraft operations annually.





Subject to eligibility and public entity approval, the local governmental entities of the Greater Brazos Region and the State of Texas offer competitive business incentive programs to attract qualified new employers in targeted industries.

The eligibility requirements vary from program to program and include specific project performance criteria such as capital investment thresholds, job creation, wage requirements, training program development, etc. The Greater Brazos Partnership will help facilitate these discussions and applications.

LOCAL INCENTIVE PROGRAMS

- Property Tax Abatements and Rebates
- Development Fee Waivers
- Fast Track Permitting
- Infrastructure Participation
- Freeport and Goods in Transit Exemptions

STATE OF TEXAS INCENTIVE PROGRAMS

- Texas Enterprise Fund
- State Sales and Use Tax Exemptions
- Skills Development Fund and In-State Tuition
- R&D Tax Credits
- Expedited Permitting
- Jobs, Energy, Technology, and Innovation (JETI), CHIPS Act

FEDERAL INCENTIVE PROGRAMS

- Opportunity Zone
- EB-5 Investor Visa Target Employment Area
- Foreign Trade Zone (FTZ 84)
- New Market Tax Credits
- USDA OneRD Guaranteed Loan

OPERATING COSTS



THE COMBINATION OF LOWER WAGES, LOWER COST OF LIVING, AND THE LOWEST COST OF DOING BUSINESS ESTABLISHES THE REGION AS A PREMIER-HUB FOR BUSINESSES LONG-TERM.

	Average Annual Wages (1)	Cost of Living (2)	Cost of Doing Business (3)
Bryan-College Station	\$61,574	86.6	78.6
DFW	\$90,108	100.2	100.5
Austin	\$98,819	129.1	114.7
San Antonio	\$74,059	91.3	89.5
Houston	\$91,874	96.9	95.5

Sources: 1. Lightcast 2. Sperlings BestPlaces.net (natl avg. 100), 3. Moody's Analytics (natl avg. 100)

QUALITY OF LIFE



Enjoy **LAKE BRYAN**, a great place to enjoy the beautiful outdoors with swimming areas, camping grounds, fishing, watersports, and over 20 miles of trails.



HISTORIC DOWNTOWN BRYAN is the place to be on the first Friday of each month for a family friendly environment with live music, art demonstrations, and much more!



VETERANS PARK AND ATHLETIC COMPLEX in College Station features 13 multi-purpose fields (4 synthetic) and five natural grass softball fields, alongside amenities such as lights on all fields and batting cages.



MUSIC VENUES AND FESTIVALS happen every year in College Station-Bryan, including Opas, Chilifest, and the Hullabaloo Music Festival!



Kyle Field is home to the **TEXAS A&M AGGIE FOOTBALL** team.



KYLE FIELD also hosts events like the George Straight Concert and international soccer games like Mexico Brazil.

CONTACTS



TOM JOHNSON

President and CEO

tjohnson@greaterbrazos.org



SALMAN KHAN

VP of Economic
Development

skhan@greaterbrazos.org



JILLIAN RYAN

Strategist

jryan@greaterbrazos.org

THANK YOU

We welcome the opportunity to discuss your specific needs, answer any questions, and showcase why the Greater Brazos Region is the ideal location for your company's future growth. Our contact information is below—please don't hesitate to reach out. We look forward to the opportunity to work together!



Call us
+979-260-1755



Email
info@greaterbrazos.org



Address
**1716 Briarcrest Drive, Suite 714
Bryan, TX 77802**

