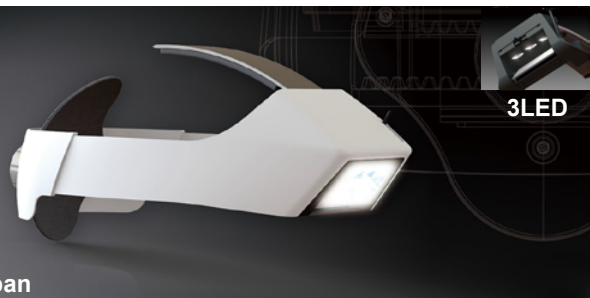


見えやすい光＋動きやすさ・かけ心地

ウェアラブル手術用照明 OPELA III™



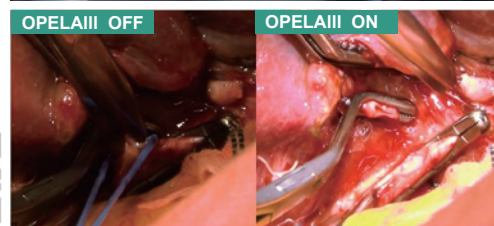
Made in Japan

OPELA IIIは、無影灯と同等の光源を搭載したヘッドライトタイプの手術用照明です。高性能かつ機動性に優れ、手術室はもとより ICU・緊急車両、災害テントなどでも威力を発揮します。
術野を明るく見やすく保つことで安全な手術に寄与する。それが私たちの使命です。

一般的名称：額帯灯（一般医療機器：クラス I） 海外登録認証
医療機器届出番号：13B3X1023100001 アメリカ FDA、タイ、バトナム、シンガポール

深部・壁部が認識しやすい ストレスが少ない・手術時間の短縮に貢献

1. 3 LED 方式、照度 145,000Lux/ 色温度 4,500K
 - 天井懸架式无影灯並みの照度
 - ヘッドライトタイプでコンパクト
 - 血管や神経等を自然な色で正確に判別できる
2. 光野の輪郭をぼかすクロス配光設計
 - 術者の目に優しい
 - 深部に入る立体的で影の少ない光
3. 術中に无影灯の調整が不要



詳しい仕様や情報はこちらから ⇒ <https://www.opela3.com/>



機動性に優れ、疲れにくい

1. バッテリー駆動
 - 動きやすい
 - 連続点灯 2.5 ～ 6 時間
 - バッテリー交換が容易
2. 重心バランスを中央に配置
 - 体感荷重、痛みが軽減
 - 長時間手術でも疲れにくい
3. 独自方式による高い放熱効果 (特許登録済)
 - 頭頂部をクールに保ち装着感が良い

緊急車両・災害テント等の特殊な医療環境で使用可能

・販売ターゲット

開腹外科手術全般、救命救急、災害医療

・求める取引先

オペ室で使用する手術器具、設備の販売経験のある販売店、販売代理店

太陽商事株式会社

<https://www.taiyocorp.com/>



2022年2月1日～2025年1月31日

Tokyo SME
SUPPORT CENTER

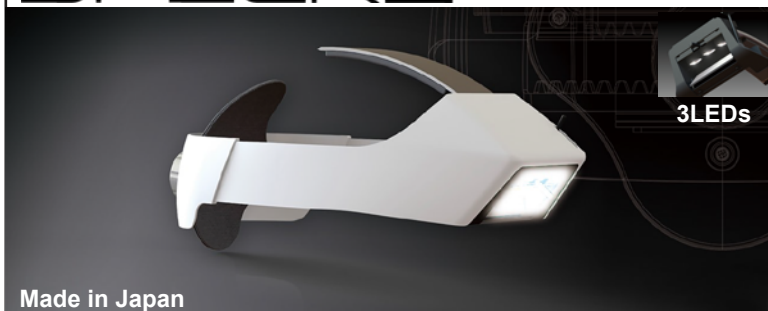
Please send your inquiry to: Tokyo SME Support Center
TEL +81-3-5822-7241 FAX +81-3-5822-7240 E-mail ttc@tokyo-kosha.or.jp
URL <https://www.tokyo-kosha.or.jp/TTC/>

Tokyo SME Support Center is founded by Tokyo Metropolitan Government to assist SMEs in Tokyo.

Superior Illumination + Freedom of Movement & Comfort

Wearable Surgical Lighting System

OPELA III™



Made in Japan

OPELAIII revolutionized the concept of surgical light by integrating both brightness of OR ceiling light and mobility of headlight with consideration for safety and comfort of surgeons, not only for use at typical operating rooms, but also in ICU, emergency vehicles, field hospital tents, etc. Our mission is to provide sufficient light for safer surgery everywhere.

Medical Device Certifications

Japan, USA, Thailand, Vietnam, Singapore

USA : FDA Listing NO. D338313 (HPP Class1) / D360523 (FQP Class2) / D360534 (FSQ Class2), MET E300019

Illuminate deep cavity area and its surrounding for better visibility, leading to safer, less stressful, and shorter surgery time

1. The 3 LED's allow Illuminance: 145,000Lux/Color Temperature: 4,500K

- High intensity light equivalent to ceiling-mounted OR light
- Compact and wearable like a headlight
- Accurately differentiate between blood vessels and nerves

2. Innovative Optical Design enables fading Contour of light

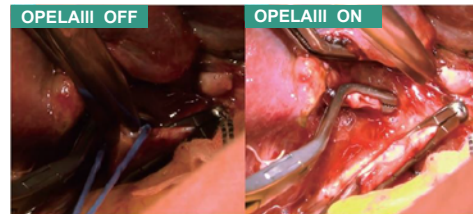
- Gentle to the eyes of surgeons, reducing eye strain
- 3 dimensional light provides shadow reduction effect

3. No Need to Adjust OR Light during surgery due to coaxial alignment



OPELAIII OFF

OPELAIII ON



For more information ⇒ <https://www.opela3.com/en/>



Special applications such as in emergency vehicles, field hospital tents, etc.



Exceptional Mobility, Less Fatigue

1. Battery-Operated

- Untethered and Easy to move around
- Continuous battery life of 2.5 - 6 hours
- Change battery smoothly during surgery

2. Center of Gravity is positioned for Maximum Comfort

- Sensation of weight minimized
- Less tiring even for long surgery

3. Patented Heat Sink Technology

- Keep temperature cool, allowing to be powerful yet safe

• Potential Customers

Medical facilities performing open surgeries, emergency critical care, and trauma

• Ideal Business Partners

Vast experience in distribution of surgical instruments and medical equipment in hospitals

TAIYO CORPORATION

<https://www.taiyocorp.com/en/>



Tokyo SME
SUPPORT CENTER

Please send your inquiry to: Tokyo SME Support Center

TEL +81-3-5822-7241 FAX +81-3-5822-7240 E-mail ttc@tokyo-kosha.or.jp

URL <https://www.tokyo-kosha.or.jp/TTC/en/>

Tokyo SME Support Center is founded by Tokyo Metropolitan Government to assist SMEs in Tokyo.